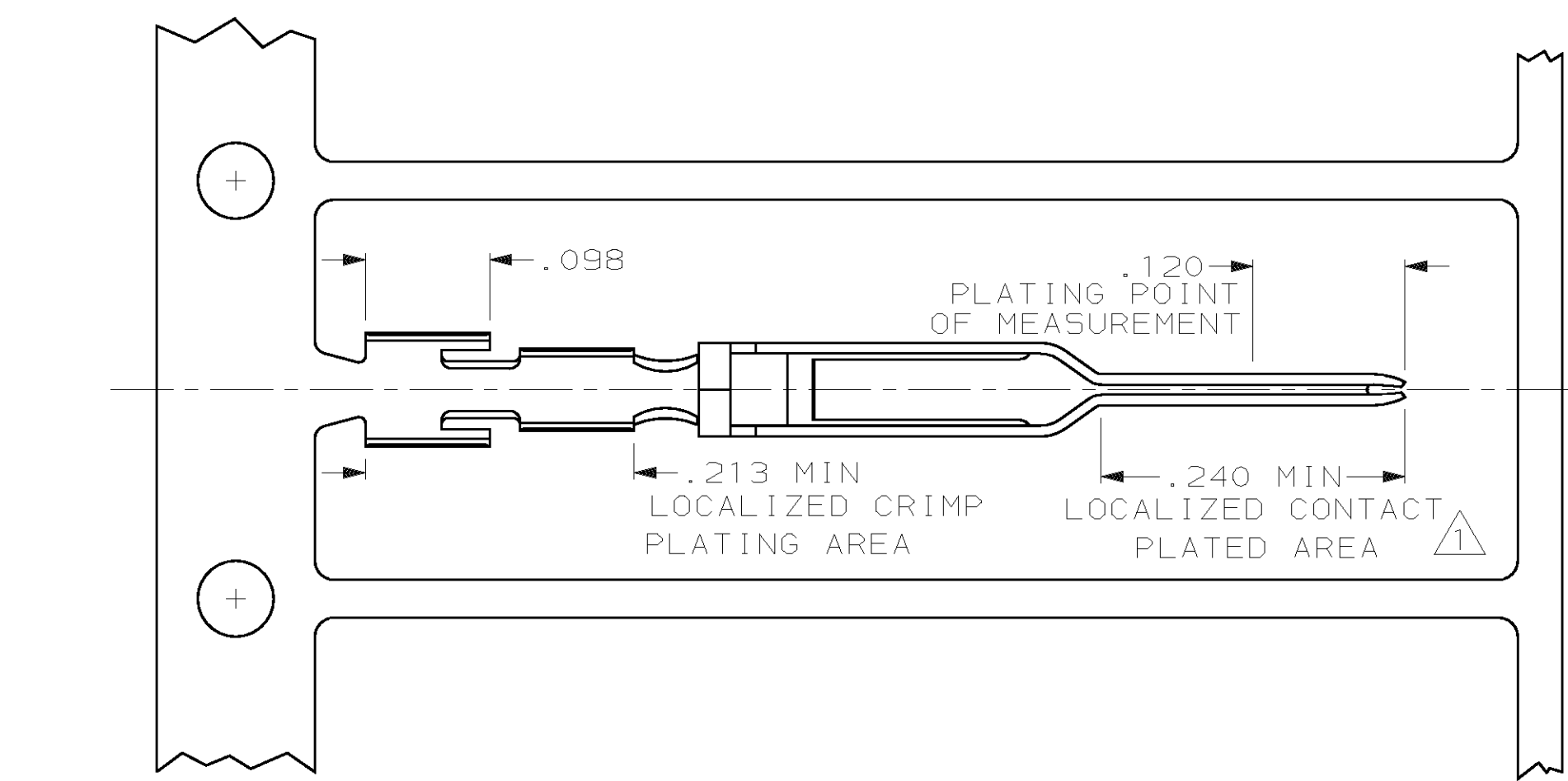
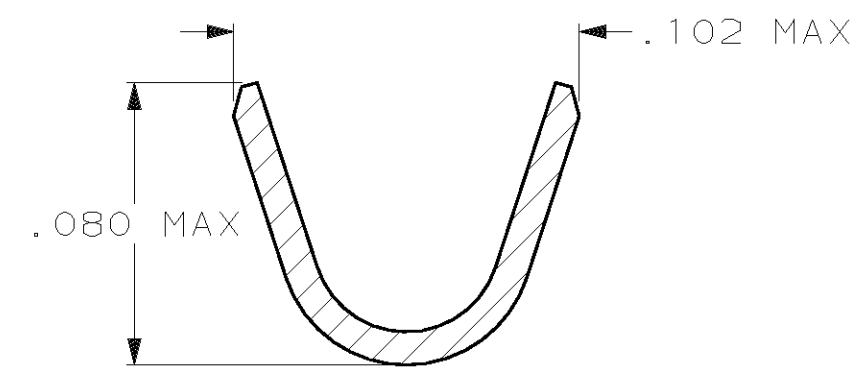
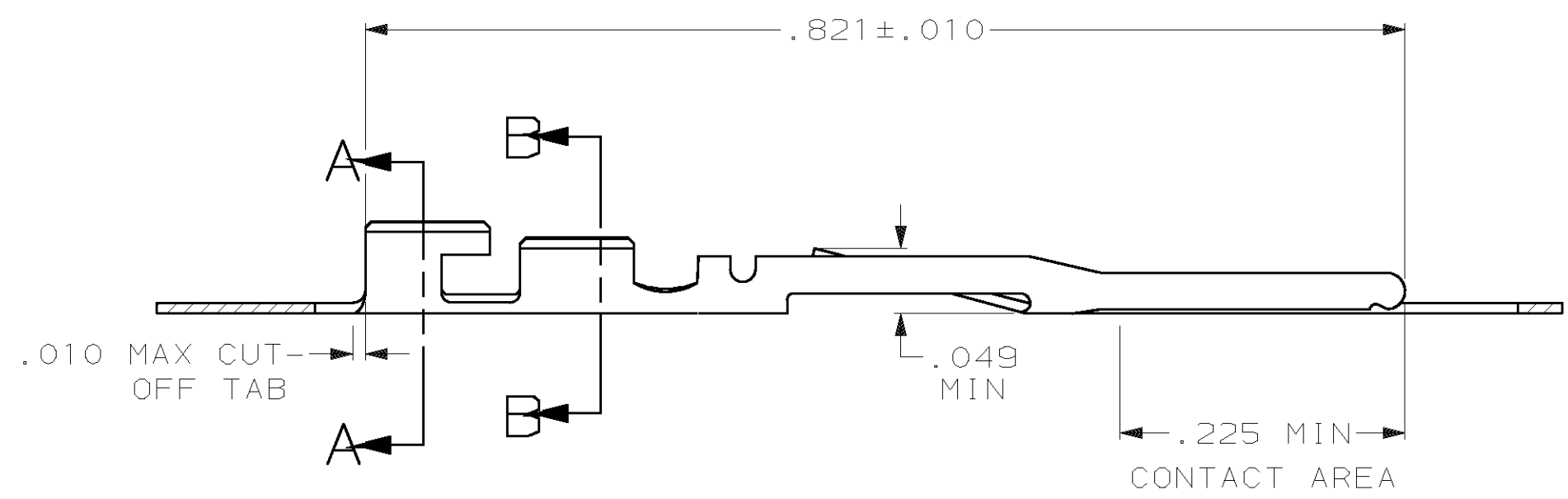


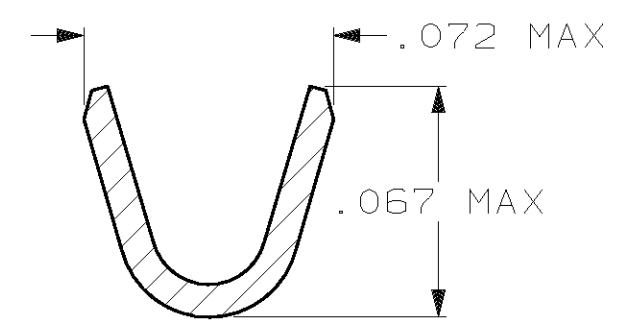
LOC	DIST	P	F	ZONE	LTR	DESCRIPTION	DATE	APPD
GP	00					P REVISED PER EC 0513-0205-03	26AUG03	JG



- ① FINISH: .000100 MIN THK BRIGHT TIN-LEAD IN LOCALIZED CRIMP PLATING AREA AND .000015 THK GOLD IN LOCALIZED CONTACT PLATING AREA OVER .000050 MIN THK NICKEL ON ENTIRE CONTACT.
- 2. FOR 22-24 AWG WIRE WITH AN INSULATION RANGE OF .040-.056 DIA.
- ③ FINISH: .000100 MIN THK TIN IN LOCALIZED CRIMP PLATING AREA AND .000015 THK GOLD IN LOCALIZED CONTACT PLATING AREA OVER .000050 MIN THK NICKEL ON ENTIRE CONTACT.



SECTION A-A
SCALE 20:1



SECTION B-B
SCALE 20:1

		9-494033-0
③	494034-2	494033-3
①	494034-1	494033-2
FINISH	LOOSE PIECE PART NO	PART NO

DO NOT SCALE PRINT. UNLESS SPECIFIED DIMENSIONS IN INCHES TOLERANCES ON : 2 PLC DEC ± - 3 PLC DEC ± .005 ANGLES ± -		DR 6-27-89 J. GALLUCCI	AMP INCORPORATED Harrisburg, Pa. 17105	
MATERIAL PHOS. BRONZE		CHK 6-29-89 D.L. ROCKER		
FINISH SEE TABLE		APPD 6-29-89 G.D. MILLER	PRODUCT SPEC 108-9024	SIZE C 00779
		APPD 6-29-89 W.T. PARKER	APPLICATION SPEC 114-16003	DRAWING NO 494033
		WEIGHT -	SCALE 8:1	SHEET 1 OF 1